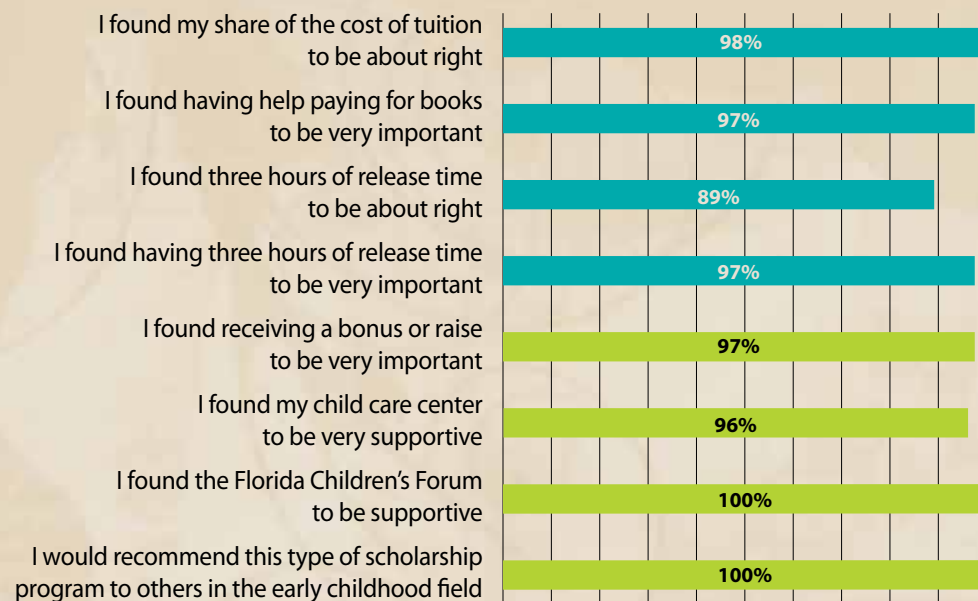
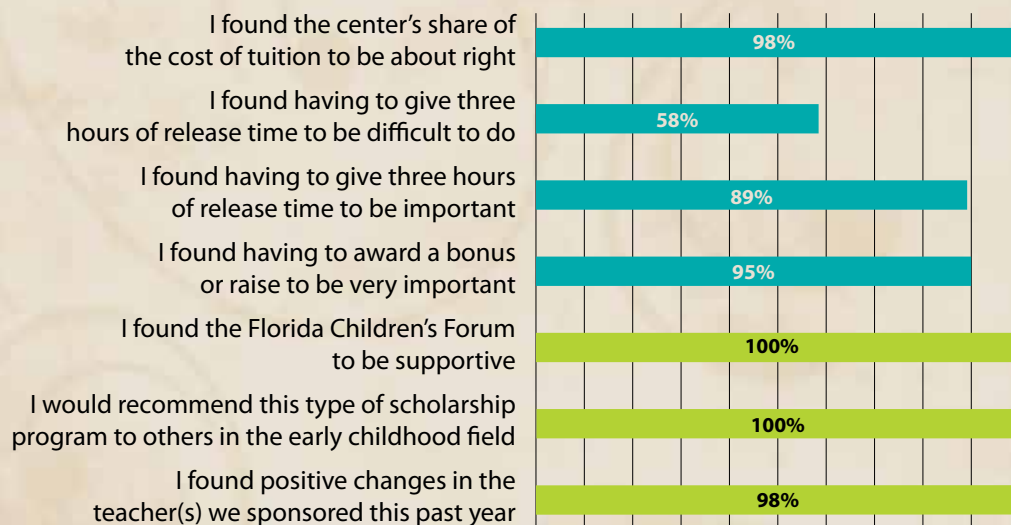


Evaluations

What the scholars think:



What the employers think:



Funders

AWI Office of Early Learning

ELC of Broward County

ELC of Duval County

ELC of Pasco and Hernando Counties

ELC of Polk County

Palm Beach Community College—Children's Services Council of Palm Beach County



For more information regarding the **Florida T.E.A.C.H. Early Childhood® Scholarship Program** please contact the Children's Forum at 877- FL-TEACH (358-3224) or visit thechildrensforum.com/teach.htm



The Florida T.E.A.C.H. Early Childhood® Scholarship Program is licensed by the Child Care Services Association in Chapel Hill, NC. The Children's Forum in Tallahassee is the licensee for the State of Florida. The Forum administers funding for the program under a contract with the Agency for Workforce Innovation, Office of Early Learning, local Early Learning Coalitions and private contributors as listed. We appreciate the financial support of our partners to improve the professional development of early childhood educators that ultimately benefits young children in Florida.

Professional Development Advisory Council

Jeanne Barker

Tallahassee Community College

Brittany Birken (Ad Hoc Member)

Office of Early Learning
Agency for Workforce Innovation

Judy Burleson

Redlands Christian Migrant Association

Lilli Copp

Florida Head Start State Collaboration Office

Gabriele DiTota

Jelly Bean Junction

Suzanne Gellens

Early Childhood Association of Florida

Alisa S. Ghazvini

Early Childhood Consultant

Shan Goff

Office of Early Learning
Florida Department of Education

Katherine Gopie

Prime Time Palm Beach County, Inc.

Sandy Hightower

Polk Community College

Linda Hood

Kids World of Chipley

Michelle Kernan

Marion County Public Schools

Ellen McKinley, President

Child Development Education Alliance

Peggy Roanne Moreno

Palm Beach Community College

Laurie Nelesen

Florida Family Child Care Home Association

Larry Pintacuda

Florida Afterschool Network

Deborah Russo

Child Care Program
Department of Children and Families

Barbara Saunders

Early Education Solutions, Inc.

Tammy Tener

Florida Family Child Care Home Association

K. Lee Tirpak

Early Learning Coalition of Broward County, Inc.

T.E.A.C.H. EARLY CHILDHOOD® SCHOLARSHIP PROGRAM



2008-2009 Annual Report

“The Florida Community College Early Childhood Network represents the early childhood community college programs in Florida. The T.E.A.C.H. program has been a central driver and catalyst in expanding programs of study to improve teacher performance. The student demand enabled by T.E.A.C.H. scholarships has driven the supply of appropriate coursework to improve their knowledge and skills. Consequently, children benefit from teachers who are better prepared and dedicated to their jobs.”

—Jeanne Barker, Tallahassee Community College

What is T.E.A.C.H.?

Teacher Education And Compensation Helps

T.E.A.C.H. is a comprehensive scholarship program that provides the early childhood workforce with access to educational opportunities. By promoting higher education, the program is helping establish a well-qualified, fairly compensated and stable workforce for Florida's children. T.E.A.C.H. provides scholarships for early childhood practitioners to work toward an Associate or Bachelor Degree in early childhood education, a Florida Staff Credential or a Florida Director Credential.

Four Primary Principles of T.E.A.C.H.

Scholarship—T.E.A.C.H. offers financial support to pay for classes, books and time away from work.

Education—T.E.A.C.H. helps participants earn hours in child development, and learn new ways to nourish and nurture the growing minds of children under the age of five.

Compensation—T.E.A.C.H. scholarship recipients earn a raise or bonus after successful completion of an educational year.

Commitment—T.E.A.C.H. scholarship recipients agree to work at their sponsoring child care programs for an additional year after each scholarship year.

In 2008-2009:

- the average GPA for T.E.A.C.H. participants was **3.28**
- **19,844** credit hours were taken
- **1,561** centers participated by sponsoring at least one participant. Of those, **252** were family child care homes
- T.E.A.C.H. participants attended **63** different training programs
- the turnover rate for 2008-2009 was **6%** compared to the national turnover rate of between 30-40%

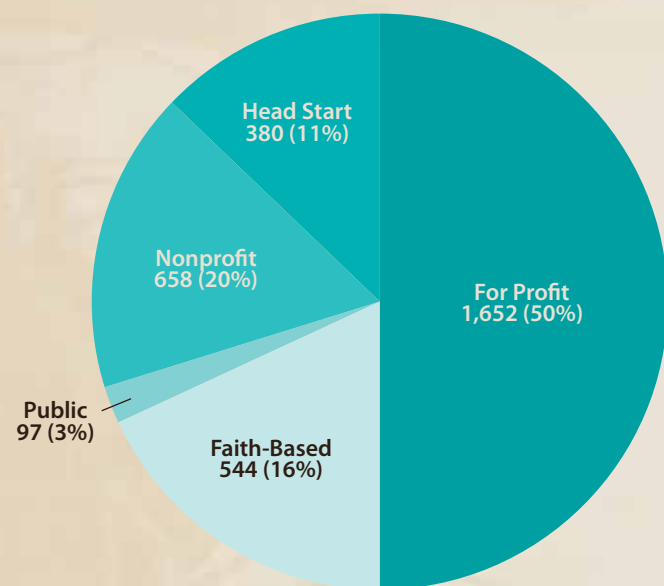
Participants by County

Alachua	74	Lee	61
Baker	20	Leon	54
Bay	30	Levy	23
Bradford	16	Liberty	4
Brevard	90	Madison	14
Broward	414	Manatee	23
Calhoun	5	Marion	67
Charlotte	31	Martin	38
Citrus	19	Miami-Dade	380
Clay	20	Monroe	19
Collier	80	Nassau	7
Columbia	14	Okaloosa	64
Desoto	5	Okeechobee	33
Dixie	2	Orange	143
Duval	167	Osceola	18
Escambia	23	Palm Beach	123
Flagler	2	Pasco	50
Franklin	1	Pinellas	110
Gadsden	6	Polk	219
Gilchrist	7	Putnam	15
Glades	6	Santa Rosa	10
Gulf	9	Sarasota	86
Hamilton	2	Seminole	63
Hardee	35	St. Johns	28
Hendry	54	St. Lucie	91
Hernando	36	Sumter	3
Highlands	18	Suwannee	4
Hillsborough	246	Taylor	3
Holmes	1	Union	3
Indian River	30	Volusia	33
Jackson	5	Wakulla	2
Jefferson	5	Walton	10
Lafayette	1	Washington	12
Lake	44		

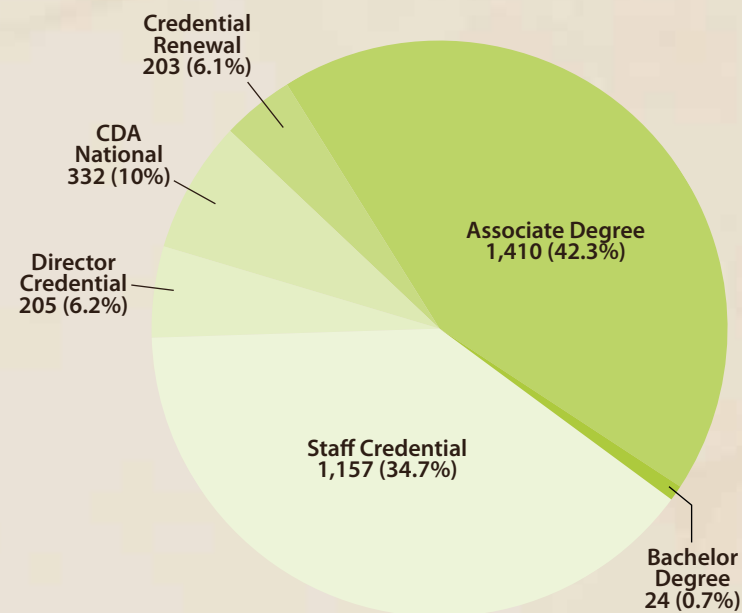
Participants by Training Institution

Bradford Union Area Vocational Technical Center	5	Lake-Sumter Community College	11
Brevard Community College	74	Learey Vocational/Technical School	7
Brewster Technical Center	2	Locklin Technical Center	6
Broward Community College	144	Lorenzo Walker Technical Institute	2
Central Florida Community College	52	Maitland Montessori School	1
Central Florida Institute of Training	107	Manatee Community College	63
Charlotte County Vocational Technical Center	1	Marchman Technical Education Center	1
Child Care Resources, Inc.	1	Miami-Dade College	260
Child Care SW Florida	1	North Florida Community College	7
Child Development Education Alliance (CDEA)	265	Northwest Florida State College	61
ChildCare Education Institute	359	Nova Southeastern University - Broward	67
Childhood Development Services	31	Nova Southeastern University - Tampa	12
Chipola College	15	Orlando Tech	6
Council for Professional Recognition	300	Palm Beach Community College	65
Daytona State College	9	Pasco-Hernando Community College	11
Edison State College	138	Pensacola Junior College	15
Episcopal Children's Services	2	Pinellas Technical Education Center	21
Family Central	57	Polk State College	187
First Coast Technical Institute	1	Santa Fe Community College	48
Flagler Adult Education Center	5	Sarasota County Technical Institute	22
Florida Atlantic University	1	Seminole Community College	43
Florida Community College at Jacksonville	127	Sheridan Vocational Technical Center	1
Florida International University	8	South Florida Community College	43
Florida Keys Community College	6	South Florida Literacy Institute Inc.	54
Florida League of Christian Schools	1	Southwest Florida College	4
Gulf Coast Community College	32	St. Johns River Community College	16
Hillsborough Community College	71	St. Petersburg College	62
Indian River State College	134	Tallahassee Community College	198
Jose Maria Vargas University	22	University of South Florida	8
Kids Incorporated of the Big Bend	5	Valencia Community College	12
Lake City Community College	36	Wesley House	2
Lake Technical Center	3	TOTAL	3,331

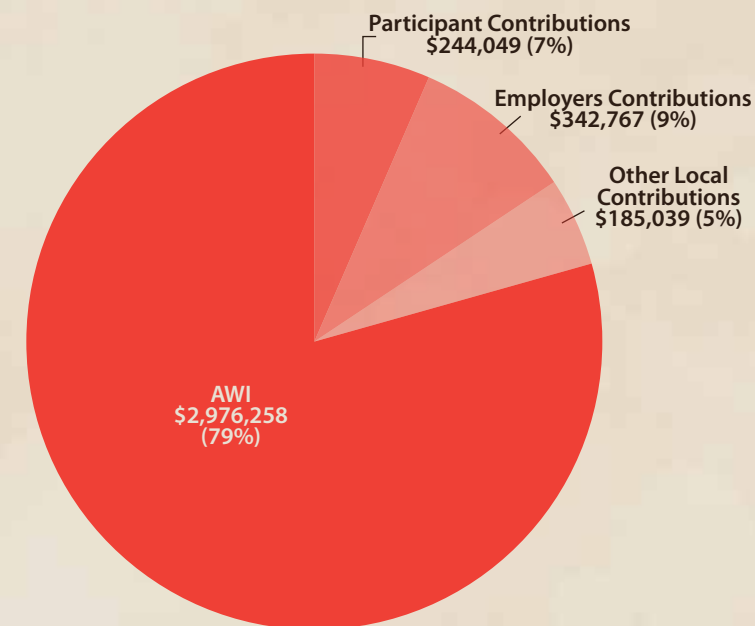
T.E.A.C.H. Employers



T.E.A.C.H. Goals



T.E.A.C.H. Revenues



T.E.A.C.H. Expenditures

