

PARTICIPANTS BY COUNTY

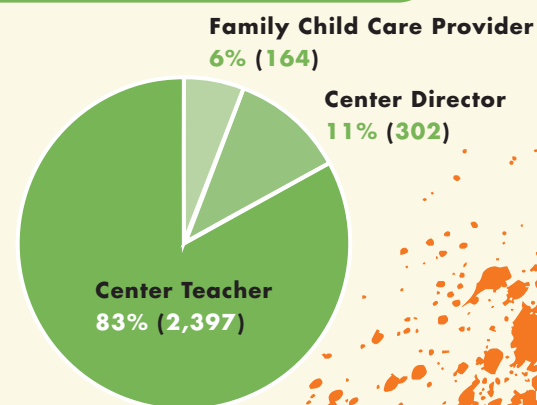
Total = 2,863

Alachua	46	Duval	97	Holmes	2	Martin	42	Saint Johns	19
Bay	15	Escambia	44	Indian River	20	Miami-Dade	360	Saint Lucie	75
Bradford	13	Flagler	6	Jackson	4	Monroe	15	Santa Rosa	5
Brevard	44	Gadsden	11	Jefferson	8	Nassau	6	Sarasota	85
Broward	433	Gilchrist	2	Lafayette	1	Okaloosa	42	Seminole	39
Calhoun	6	Glades	4	Lake	32	Okeechobee	23	Sumter	5
Charlotte	20	Gulf	12	Lee	73	Orange	134	Suwannee	1
Citrus	28	Hamilton	1	Leon	77	Osceola	24	Taylor	8
Clay	28	Hardee	24	Levy	11	Palm Beach	115	Union	4
Collier	57	Hendry	28	Liberty	3	Pasco	60	Volusia	40
Columbia	10	Hernando	34	Madison	15	Pinellas	79	Wakulla	3
DeSoto	3	Highlands	23	Manatee	23	Polk	132	Walton	8
Dixie	2	Hillsborough	199	Marion	49	Putnam	16	Washington	15

Demographics of T.E.A.C.H. Participants

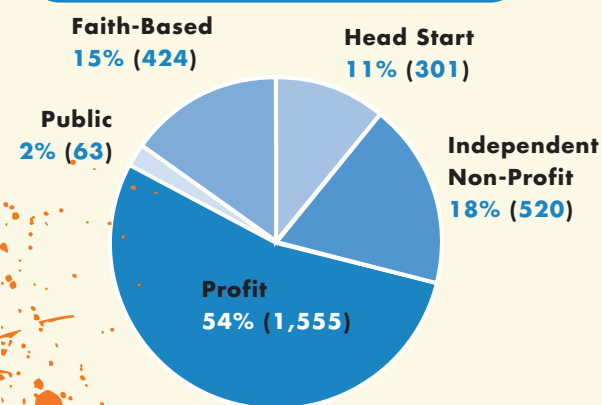
PROVIDER TYPE

Total = 2,863



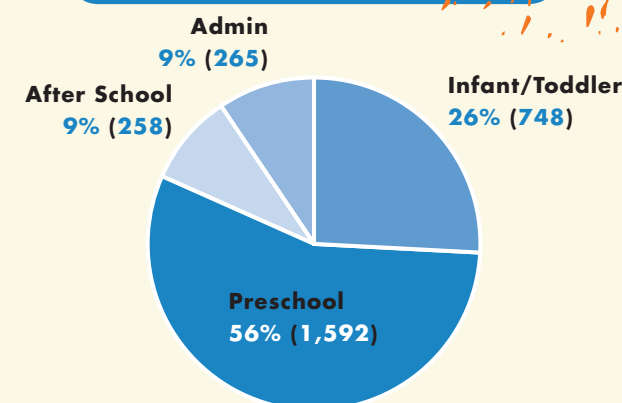
PROGRAM TYPE

Total = 2,863



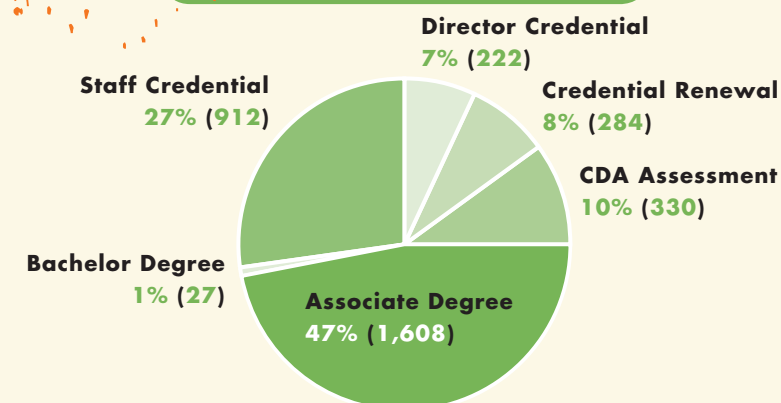
AGE GROUP

Total = 2,863



SCHOLARSHIP TYPE

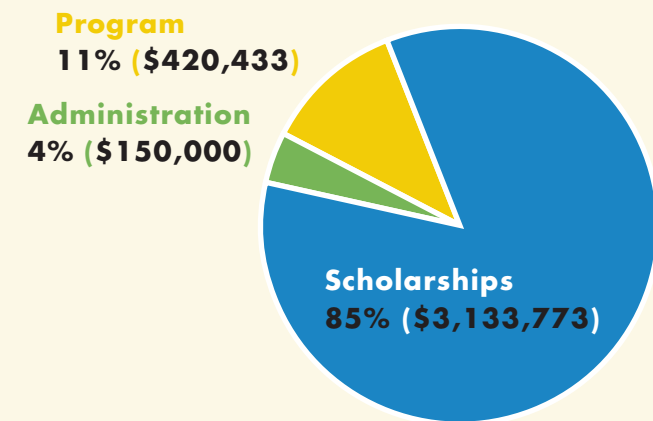
Total = 3,383



Financial Report

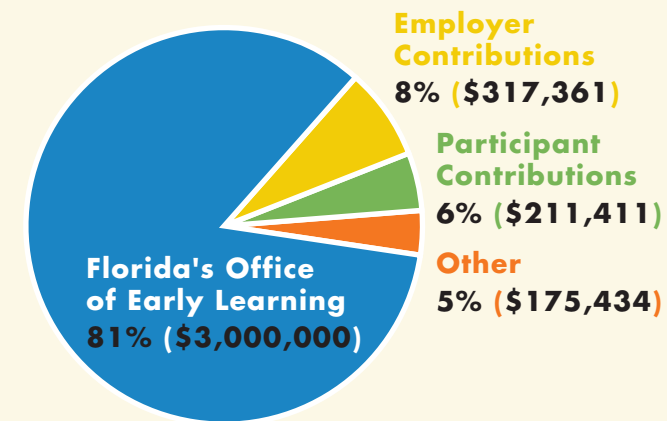
EXPENDITURES

\$3,704,206



REVENUES

\$3,704,206



PROFESSIONAL DEVELOPMENT ADVISORY COUNCIL

Brittany Birken, Ph.D. CEO

Florida Children's Services Council

Judy Burleson Director of Education

Redlands Christian Migrant Association

Lilli Copp Director

Florida Head Start State Collaboration Office

Suzanne Gellens Executive Director

Florida Association for the Education of Young Children

Alisa Ghazvini, Ph.D.

Early Childhood Consultant

Katherine Gopie Director for Professional Development

Prime Time Palm Beach County, Inc.

Linda Hood Director

Kids World of Chipley

Ellen McKinley President

Child Development Education Alliance

Peggy Roanne Moreno, Ed.D. Director

Institute of Excellence in Early Care and Education

Palm Beach State College

Larry Pintacuda Director

Florida Afterschool Network

Deborah Russo Director

Child Care Program

Dept. of Children and Families

Barbara Sims Regional Child Care Specialist

CCB Communications Management Center

Michelle Sizemore Director

Program Standards and Professional Development

Florida Department of Education

Kathryn Stuckey, Ed.D. Program Manager

Dept. of Social and Behavioral Sciences

State College of Florida, Manatee and Sarasota

Tammy Tener Executive Director

Florida Family Child Care Home Association, Inc.

K. Lee Tirpak Director of Program Operations

Early Learning Coalition of Broward County, Inc



The Florida T.E.A.C.H. Early Childhood® Scholarship Program is licensed by the Child Care Services Association in Chapel Hill, NC. The Children's Forum in Tallahassee is the licensee for the State of Florida. The Forum administers funding for the program under a contract with Florida's Office of Early Learning and private contributors as listed. We appreciate the financial support of our partners to improve the professional development of early childhood educators that ultimately benefits young children in Florida.

For more information regarding the Florida T.E.A.C.H. Early Childhood® Scholarship Program please contact the Children's Forum at 877 - FL - TEACH (358 - 3224) or visit www.teach-fl.com



2011 - 2012
Annual Report

Early Childhood® Florida

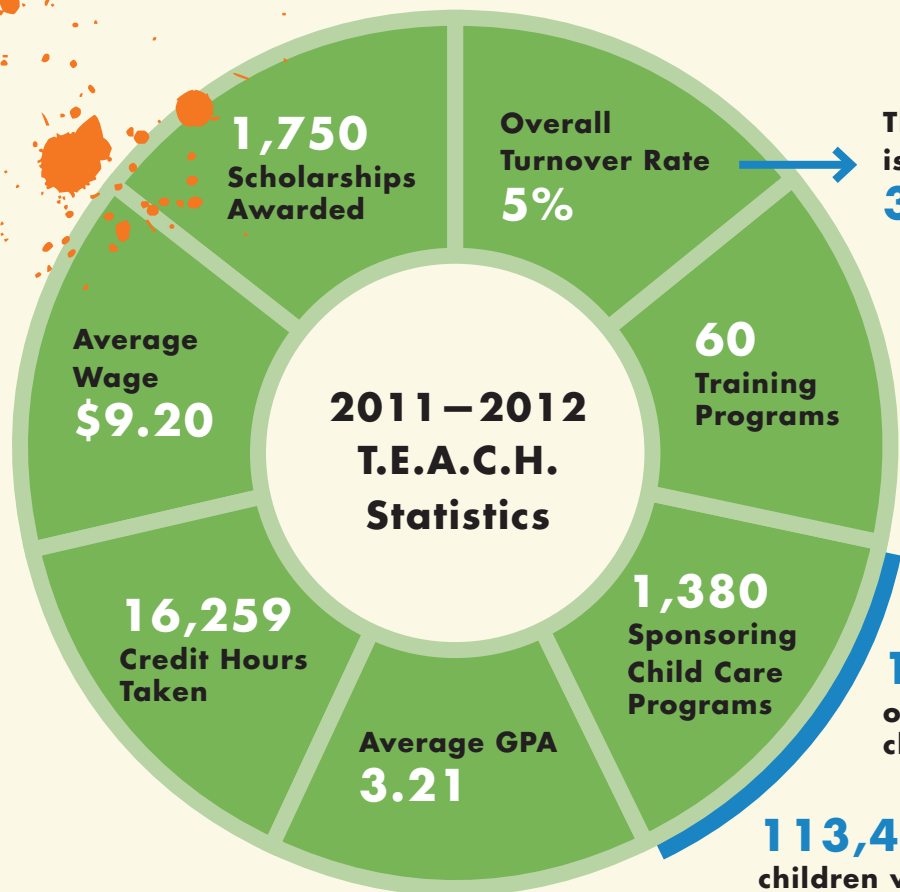
WHAT IS T.E.A.C.H.?

(Teacher Education and Compensation Helps)

T.E.A.C.H. is a comprehensive scholarship program that provides the early childhood workforce with access to educational opportunities. By promoting higher education, the program is helping to establish a well-qualified, fairly compensated and stable workforce for Florida's children. T.E.A.C.H. provides scholarships for early childhood practitioners to work toward an Associate or Bachelor Degree in early childhood education, a Florida Staff Credential or a Florida Director Credential.

4 PRIMARY PRINCIPLES OF T.E.A.C.H.

- 1 Education**
T.E.A.C.H. helps participants earn hours in child development to learn new ways to nurture the growing minds of children.
- 2 Scholarship**
T.E.A.C.H. offers financial support to pay for classes, books and time away from work.
- 3 Commitment**
T.E.A.C.H. recipients agree to work at their sponsoring programs for an additional year after each scholarship.
- 4 Compensation**
T.E.A.C.H. scholarship recipients earn a raise or bonus after successful completion of an educational year.



The National turnover rate is estimated annually at **30-40%**

Average Associate of Science Degree Outcomes for 2011-2012

- 13 credit hours earned
- 9% increase in earnings
- 4% turnover

154 of those were family child care homes

113,444 children were enrolled in those programs and homes

CENTER EVALUATION RESPONSES:

All centers that have actively sponsored at least one recipient in the past year receive an evaluation in the spring. The responses from the past year show that:

- 94% found the center's share of the cost of tuition to be about right.
- 85% found having to give 3 hours of release time to be difficult to do.
- 89% found having to give 3 hours of release time to be important.
- 98% found having to award a raise/bonus to be very important.
- 100% found the Children's Forum to be supportive.
- 96% reported they would recommend T.E.A.C.H. to others.
- 98% reported positive changes in their sponsored teachers this past year.



RECIPIENT EVALUATION RESPONSES:

All recipients who have had an active contract in the past year receive an evaluation in the spring. The responses from the past year show that:

- 96% found their share of the cost of tuition to be about right.
- 95% found having help paying for books to be very important.
- 88% found 3 hours of release time to be about right.
- 85% found having 3 hours of release time to be very important.
- 92% found receiving a bonus or raise to be very important.
- 94% found their child care center to be very supportive.
- 97% found the Children's Forum to be supportive.
- 100% would recommend this type of scholarship program to others.



PARTICIPANTS BY TRAINING INSTITUTION

Total = 2,863

Bradford Union Area Vocational Technical Center	6	Miami-Dade College	223
Brevard Community College	24	North Florida Community College	8
Broward College	117	Northwest Florida State College	40
Central Florida Institute of Training	33	Nova Southeastern University	7
Child Care SW Florida	5	Orlando Tech	3
Child Development Education Alliance	181	Palm Beach Atlantic College	2
ChildCare Education Institute	308	Palm Beach State College	55
Childhood Development Services	20	Pasco-Hernando Community College	16
Chipola College	9	Pensacola State College	16
College of Central Florida	33	Pinellas Technical Education Center	20
Council for Professional Recognition	313	Polk State College	127
Daytona State College	8	Rasmussen College	6
Edison State College	76	Santa Fe College	26
Family Central	50	Sarasota County Technical Institute	22
Flagler Adult Education Center	4	Seminole State College of Florida	31
Florida Gateway College	49	Smart Horizons Institute	105
Florida International University	18	South Florida Community College	37
Florida Keys Community College	4	South Florida Literacy Institute Inc.	110
Florida League of Christian Schools	2	South Florida Montessori Education Center	1
Florida State College at Jacksonville	73	Southwest Florida College	3
Gulf Coast State College	23	St. Johns River State College	17
Hillsborough Community College	58	St. Petersburg College	72
Indian River State College	108	State College of Florida, Manatee-Sarasota	65
Institute for Early Childhood Education	12	Summit Montessori Teacher Training Institute	1
Jose Maria Vargas University	7	Tallahassee Community College	265
Lake-Sumter Community College	15	University of South Florida	1
Learey Vocational/Technical School	7	University of South Florida Polytechnic	1
Lee County High Tech Center	1	Valencia Community College	4
Lorenzo Walker Technical Institute	4	Wesley House	9
Marchman Technical Education Center	2		

FUNDERS

