

PARTICIPANTS BY COUNTY

Total = 3,019

Alachua	43	Escambia	36	Indian River	26	Monroe	16	Santa Rosa	16
Bay	12	Flagler	21	Jackson	5	Nassau	7	Sarasota	61
Bradford	13	Franklin	1	Jefferson	2	Okaloosa	40	Seminole	50
Brevard	81	Gadsden	7	Lafayette	4	Okeechobee	22	Sumter	11
Broward	461	Gilchrist	2	Lake	39	Orange	156	Suwannee	1
Calhoun	4	Glades	1	Lee	46	Osceola	41	Taylor	4
Charlotte	36	Gulf	5	Leon	68	Palm Beach	118	Union	1
Citrus	22	Hamilton	1	Levy	18	Pasco	38	Volusia	134
Clay	16	Hardee	22	Madison	4	Pinellas	116	Wakulla	1
Collier	39	Hendry	21	Manatee	43	Polk	118	Walton	11
Columbia	12	Hernando	49	Marion	62	Putnam	11	Washington	2
DeSoto	2	Highlands	33	Martin	38	Saint Johns	28		
Duval	99	Hillsborough	230	Miami-Dade	337	Saint Lucie	55		

PARTICIPANTS BY EDUCATIONAL INSTITUTIONS

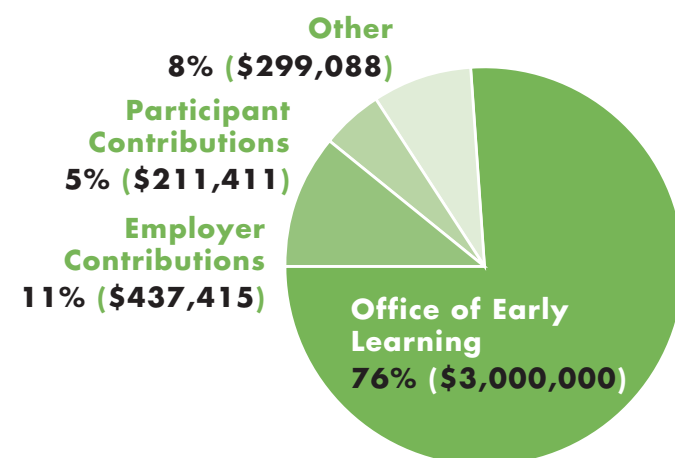
Total = 3,019

Bradford Union Technical Center	7	Lorenzo Walker Technical Institute	1
Brewster Technical Center	1	Maitland Montessori School	8
Broward College	78	Miami-Dade College	175
Central Florida Institute of Training	27	Montessori Teacher Training Institute	3
Child Development Education Alliance	203	North Florida Community College	6
ChildCare Education Institute	406	Northwest Florida State College	39
Childhood Development Services	64	Nova Southeastern University	4
Chipola College	4	Orlando Montessori Teacher Education Institute	1
College of Central Florida	33	Orlando Tech	2
Council for Professional Recognition	268	Palm Beach State College	53
Daytona State College	61	Pasco-Hernando Community College	11
Eastern Florida State College	33	Pensacola State College	25
Edison State College	35	Pinellas Technical Education Center	62
Family Central	65	Polk State College	76
Flagler Adult Education Center	65	Rasmussen College	6
Flagler Technical Institute	4	Santa Fe College	11
Florida Gateway College	37	Sarasota County Technical Institute	29
Florida International University	15	Seminole State College of Florida	36
Florida Keys Community College	1	Sheridan Vocational Technical Center	12
Florida League of Christian Schools	5	Smart Horizons Institute	245
Florida State College at Jacksonville	44	South Florida Literacy Institute	144
Gulf Coast State College	14	South Florida State College	39
Hialeah Miami Lakes Adult Education Center	16	St. Johns River State College	3
Hillsborough Community College	80	St. Petersburg College	57
Indian River State College	89	State College of Florida, Manatee-Sarasota	52
Institute for Early Childhood Education	23	Summit Montessori Teacher Training Institute	1
Jose Maria Vargas University	6	Tallahassee Community College	207
Lake-Sumter State College	9	Valencia College	10
Learey Vocational/Technical School	7	Wesley House	1

Financial Report

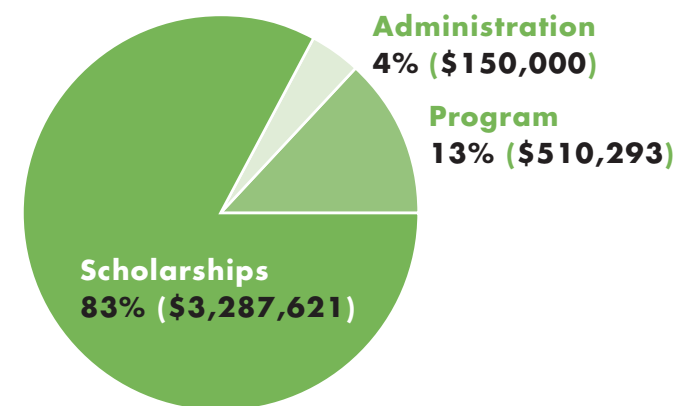
REVENUES

\$3,947,914



EXPENDITURES

\$3,947,914



PROFESSIONAL DEVELOPMENT ADVISORY COUNCIL

Ellyn Setnor Bogdanoff, Esq. President
Florida Association for Child Care Management (FACCM)

Judy Burleson Director of Education
Redlands Christian Migrant Association

Lilli Copp Director
Florida Head Start State Collaboration Office

Suzanne Gellens Executive Director
Florida Association for the Education of Young Children

Alisa Ghazvini, Ph.D.
Early Childhood Consultant

Shan Goff Executive Director
Office of Early Learning

Katherine Gopie Director for Professional Development
Prime Time Palm Beach County, Inc.

Linda Hood Director
Kids World of Chipley

Grace Kolbe, Ed.D. Early Childhood Education Director
Institute of Excellence in Early Care and Education

Ellen McKinley President
Child Development Education Alliance

Debra Metcalfe Coordinator of Applied Education
Polk State College

Larry Pintacuda Director
Florida Afterschool Network

Deborah Russo Director
Office of Child Care Regulation and Background Screening
Department of Children and Families

Michelle Sizemore Director
Program Standards and Professional Development
Florida Department of Education

Rachel Spector Quality Counts Administrator
The Children's Trust

Tammy Tener Executive Director
Florida Family Child Care Home Association, Inc.

K. Lee Tirpak Chief Program Officer
Early Learning Coalition of Broward County, Inc.



The Florida T.E.A.C.H. Early Childhood® Scholarship Program is licensed by the Child Care Services Association in Chapel Hill, NC. The Children's Forum in Tallahassee is the licensee for the State of Florida. The Forum administers funding for the program under a contract with the Office of Early Learning and private contributors as listed. We appreciate the financial support of our partners to improve the professional development of early childhood educators that ultimately benefits young children in Florida.



For more information regarding the Florida T.E.A.C.H. Early Childhood® Scholarship Program please contact the Children's Forum at 877 - FL - TEACH (358 - 3224) or visit www.teach-fl.com

T.E.A.C.H. Early Childhood® Florida

2013 - 2014 Annual Report



WHAT IS T.E.A.C.H.? Early Childhood® Florida

The Florida T.E.A.C.H. (Teacher Education And Compensation Helps) Early Childhood® Scholarship Program is a comprehensive scholarship program that provides the early childhood workforce with access to educational opportunities. By promoting higher education, the program is helping to establish a well-qualified, fairly-compensated and stable workforce for Florida's children. T.E.A.C.H. provides scholarships for early childhood practitioners to work toward an Associate or Bachelor Degree* in early childhood education, a Staff Credential or a Florida Director Credential.

*Bachelor degree only available for QRIS centers in Miami-Dade County

4 PRIMARY PRINCIPLES OF T.E.A.C.H.

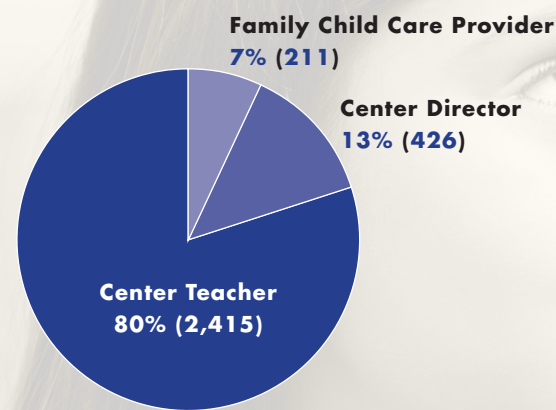
- 1 Education**
T.E.A.C.H. participants earn hours in child development and learn new ways to nurture the growing minds of children.
- 2 Scholarship**
T.E.A.C.H. offers financial support to pay for classes, books and time away from work.
- 3 Commitment**
T.E.A.C.H. recipients agree to work at their sponsoring programs for an additional year after each scholarship.
- 4 Compensation**
T.E.A.C.H. scholarship recipients earn a raise or bonus after the successful completion of an educational year.



Demographics of T.E.A.C.H. Participants

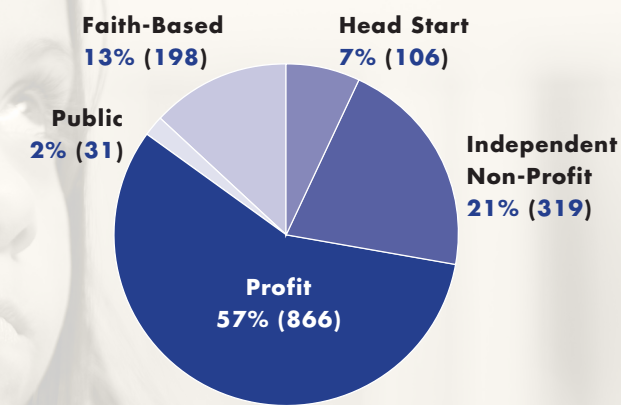
PROVIDER TYPE

Total = 3,019



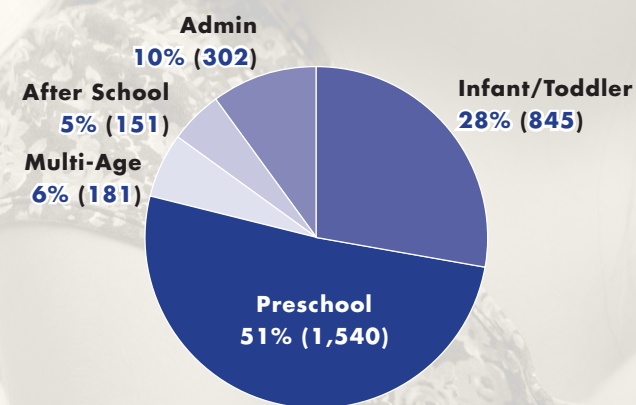
CENTER TYPE

Total = 1,520



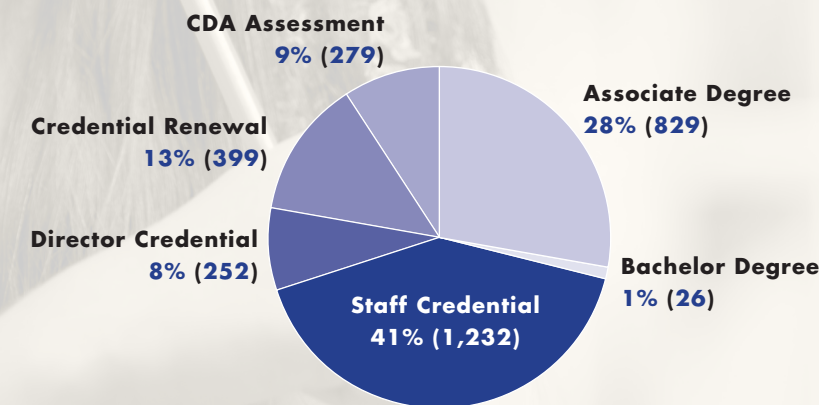
AGE GROUP

Total = 3,019

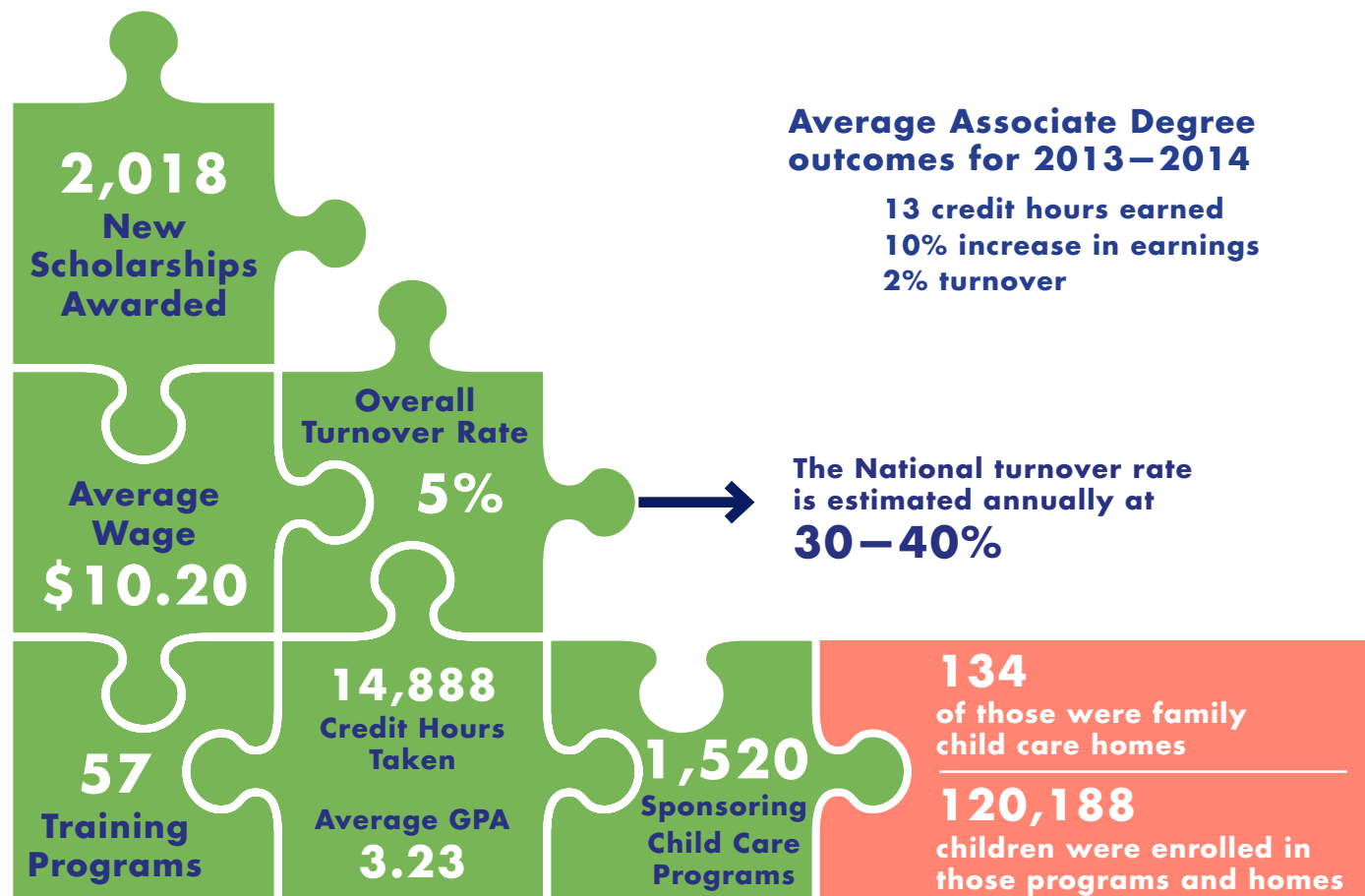


SCHOLARSHIP TYPE

Total = 3,019



2013–2014 T.E.A.C.H. Statistics



CENTER EVALUATION RESPONSES:

All centers that have actively sponsored at least one recipient in the past year are asked to complete an evaluation in the spring.

- 94% found the center's share of the cost of tuition to be about right.
- 82% found it easy to pay the center's share of the cost of tuition
- 57% found having to give three hours of release time to be difficult to do
- 88% found having to give three hours of release time to be important
- 98% found having to award a raise/bonus to be important
- 99% found the Children's Forum to be supportive
- 99% reported they would recommend T.E.A.C.H. to others
- 98% reported positive changes in their sponsored teachers this past year

RECIPIENT EVALUATION RESPONSES:

All recipients who have had an active contract in the past year are asked to complete an evaluation in the spring.

- 95% found their share of the cost of tuition to be about right
- 93% found that having help paying for books was very important
- 86% found three hours of release time to be about right
- 98% found having three hours of release time to be very important
- 91% found receiving a bonus or raise to be very important
- 86% found their child care center to be very supportive
- 97% found the Children's Forum to be supportive
- 99% would recommend this type of scholarship program to others

FUNDERS

OFFICE OF
Early Learning
LEARN EARLY. LEARN FOR LIFE.

