

Scholars by County n = 3,780

Alachua	75	Dixie	2	Highlands	20	Miami-Dade	443	Saint Lucie	71
Baker	4	Duval	129	Hillsborough	286	Monroe	11	Santa Rosa	9
Bay	23	Escambia	27	Indian River	36	Nassau	5	Sarasota	98
Bradford	10	Flagler	26	Jefferson	4	Okaloosa	30	Seminole	61
Brevard	93	Franklin	1	Lafayette	1	Okeechobee	8	Sumter	6
Broward	531	Gadsden	6	Lake	47	Orange	268	Suwannee	2
Calhoun	3	Gilchrist	4	Lee	87	Osceola	58	Taylor	8
Charlotte	41	Glades	1	Leon	77	Palm Beach	183	Union	2
Citrus	20	Gulf	13	Levy	9	Pasco	67	Volusia	115
Clay	22	Hamilton	2	Madison	6	Pinellas	161	Wakulla	9
Collier	141	Hardee	12	Manatee	46	Polk	134	Walton	7
Columbia	7	Hendry	14	Marion	53	Putnam	8	Washington	4
DeSoto	4	Hernando	36	Martin	45	Saint Johns	48		

Scholars by Training Institution n = 3,780

Broward College	52	National Early Childhood Program Accreditation	20
Central Florida Institute of Training	29	National Institute of Child Care Management	36
Child Development Education Alliance	146	North Florida Community College	14
ChildCare Education Institute	495	Northwest Florida State College	31
Childhood Development Services	72	Nova Southeastern University	8
Chipola College	4	Orange Technical College	3
College of Central Florida	21	Palm Beach State College	38
Council for Professional Recognition	754	Pasco-Hernando State College	5
Daytona State College	57	Pensacola State College	8
Eastern Florida State College	36	Pinellas Technical College	86
Family Central	71	Polk State College	71
Flagler Technical Institute	45	Rasmussen College	17
Florida Atlantic University	8	Santa Fe College	17
Florida Gateway College	44	Seminole State College of Florida	35
Florida International University	33	Sheridan Technical College	26
Florida Keys Community College	2	Sistema Universitario Ana G. Mendez	2
Florida League of Christian Schools	58	Smart Horizons Institute	388
Florida SouthWestern State College	25	South Florida Literacy Institute	168
Florida State College at Jacksonville	62	South Florida State College	19
Gulf Coast State College	12	St. Johns River State College	8
Hillsborough Community College	48	St. Petersburg College	80
Indian River State College	71	State College of Florida, Manatee-Sarasota	84
Institute for Early Childhood Education	4	Summit Montessori Teacher Training Institute	2
Jose Maria Vargas University	3	Suncoast Technical College	17
Lake-Sumter State College	14	Tallahassee Community College	185
Leary Technical College	9	University of Central Florida	5
Lindsey Hopkins Technical Education Center	1	University of North Florida	3
Maitland Montessori School	2	University of South Florida	2
Miami-Dade College	203	Valencia College	10
Montessori Academy Training Institute	7	Village Montessori Training Center	1
Montessori Teacher Training Institute	3		



Financial Report

Revenues
\$4,963,717

OEL 4,500,000
Employer 258,324
Participant..... 205,393

Expenditures
\$4,963,717

Scholarships... 3,608,717
Admin 225,000
Program 1,130,000

Professional Development Advisory Council

Ellyn Setnor Bogdanoff
Florida Association for Child Care Management

Judy Burleson
Redlands Christian Migrant Association

Sharon Carie
Florida Afterschool Alliance

Lilli Copp
Florida Head Start State Collaboration Office

Chris Duggan
Florida Head Start Association

Alisa Ghazvini
Association of Early Learning Coalitions

Linda Hood
Kids World of Chipley

Gege Kreisler
Florida Association for the Education of Young Children

Rodney MacKinnon
Office of Early Learning

Ellen McKinley
Child Development Education Alliance

Debra Metcalfe
Polk State College

Antrica Morgan
Office of Early Learning

Kimberly O'Neal
Just 4 Kids

Tara Orlovski
Florida Center for Interactive Media

Erin Smeltzer
Office of Early Learning

Rachel Spector
The Children's Trust

Tammy Terner
Florida Family Child Care Home Association, Inc.

Abby Thorman
Early Learning Florida

K. Lee Tirpak
Early Learning Coalition of Broward County, Inc.

Samantha Wass de Czege
Department of Children and Families

Christian Winterbottom
University of North Florida

Kenya Wolff
Northwest Florida State College



The Florida T.E.A.C.H. Early Childhood Scholarship Program is licensed by Child Care Services Association in Chapel Hill, NC. The Children's Forum in Tallahassee is the licensee for the State of Florida. The Forum administers funding for the program under a contract with the Office of Early Learning. We appreciate the financial support of our partners to improve the professional development of early educators that ultimately benefits young children in Florida.



T.E.A.C.H. Funders
Florida's Office of Early Learning



For more information regarding the Florida T.E.A.C.H. Early Childhood Scholarship Program please contact the Children's Forum at 877-FL-TEACH (358-3224) or visit www.teach-fl.com



2015-2016 Annual Report

T.E.A.C.H.

Early Childhood® Scholarship Program Florida

What is T.E.A.C.H.?

T.E.A.C.H. (Teacher Education And Compensation Helps) is a comprehensive scholarship program that provides the early childhood workforce with access to educational opportunities. By promoting higher education, the program is helping to establish a well-qualified, fairly-compensated and stable workforce for Florida's children. T.E.A.C.H. provides scholarships for early childhood practitioners to work toward an Associate or Bachelor Degree in early childhood education, a Florida Staff Credential or a Florida Director Credential.

Primary Principles of T.E.A.C.H.

1

Education

T.E.A.C.H. helps scholars earn hours in child development to learn new ways to nurture the growing minds of children.

2

Scholarship

T.E.A.C.H. offers financial support to pay for classes, books and time away from work.

3

Commitment

T.E.A.C.H. scholars agree to work at their sponsoring programs for an additional year after each scholarship.

4

Compensation

T.E.A.C.H. scholars earn a raise or bonus after the successful completion of an educational year.

T.E.A.C.H. Statistics



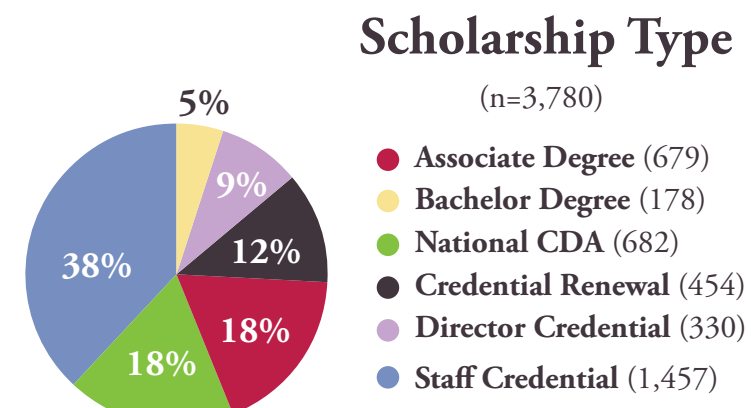
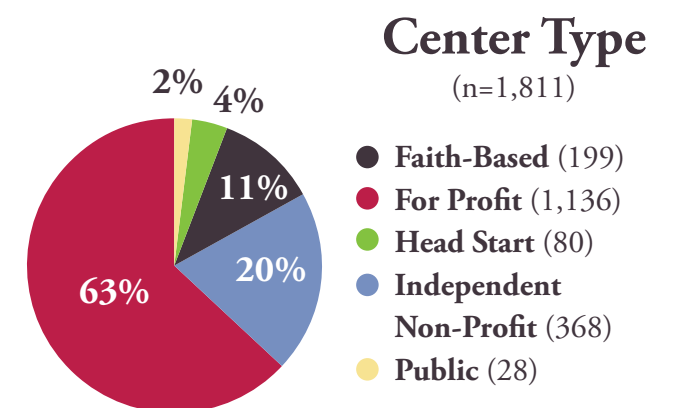
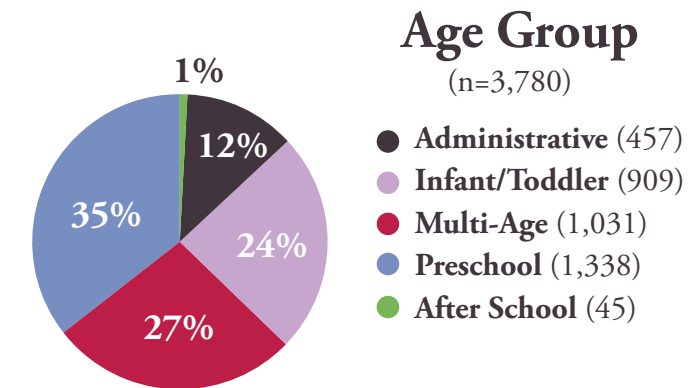
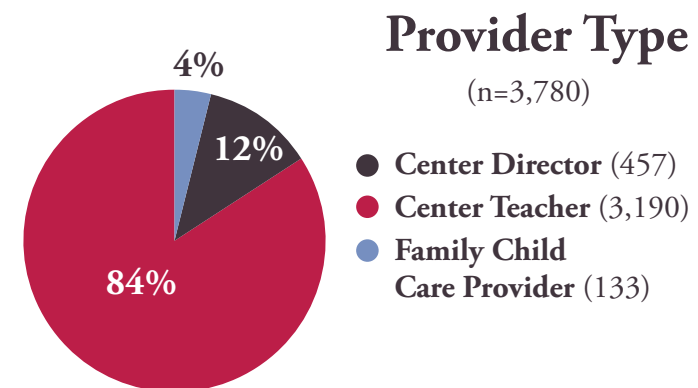
Average Associate Degree Outcomes



Average Bachelor Degree Outcomes

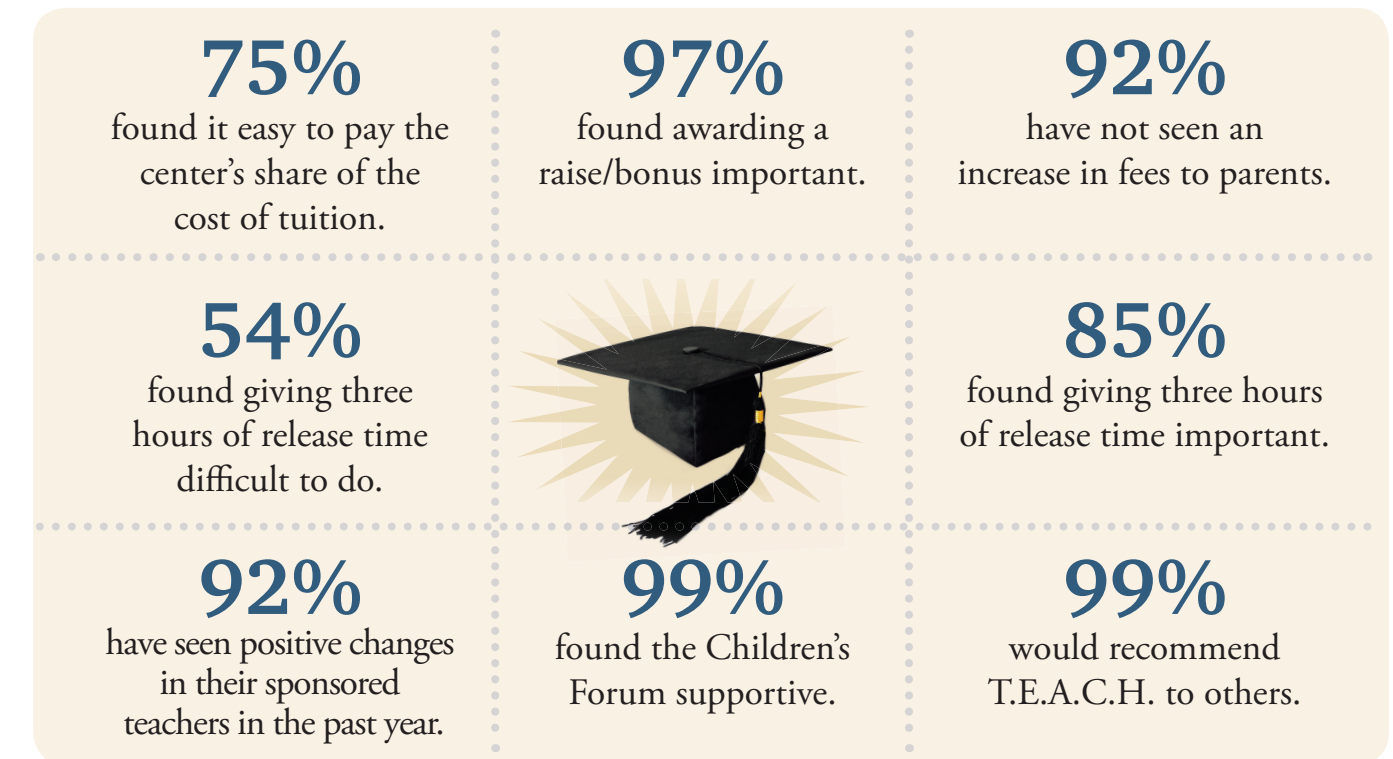


Demographics of T.E.A.C.H. Scholars



Center Evaluation Responses

All centers who have actively sponsored at least one scholar in the past year receive an evaluation in the spring. The response rate was 38%. (Of 761 distributed, 287 were completed; 217 were unopened.) The responses from the past year show that:



Scholar Evaluation Responses

All scholars who have had an active contract in the past year receive an evaluation in the spring. We had a 38% response rate. (Of 1,318 distributed, 498 were completed; 297 were unopened.) The responses from the past year show that:

